



PLATON[®]
Product Guide

RUGGED, DIMPLED HIGH-DENSITY
POLYETHYLENE (HDPE) MEMBRANE THAT
KEEPS FOUNDATIONS DRY



Platon is a rugged, dimpled high-density polyethylene (HDPE) membrane that keeps foundations and flooring dry. Platon creates an impermeable vapour barrier and air gap, allowing concrete to breathe while controlling moisture. It has been used on foundations since the early 1990s, with no product-related leaks.

Platon keeps wet soil away from the foundation wall. Any moisture that may find its way past the membrane is carried to the foundation drain by the air gap drainage path. Platon is commonly used to waterproof block walls, poured concrete walls, permanent wood, existing foundations and Insulated Concrete Forms (ICF).

Platon also isolates flooring from cold, damp concrete. When used beneath a wooden sub-floor and over concrete in a basement, it makes floors comfortable, odour free, healthy and dry.

TYPICAL APPLICATIONS

- Foundation waterproofing
- Flooring underlayment

Advanced Technology

Creates an impermeable vapour barrier and air gap, allowing concrete to breathe while controlling moisture

Performance

Solves problems associated with basement leakage and interior moisture control

Easy Installation

No specialized training or equipment required, can be installed year-round



PLATON INSTALLATION - FOUNDATION WALLS

SPECIFICATIONS



PLATON HDPE MEMBRANE - 6MM (1/4") DIMPLES

Roll Size

m	m ²	ft	ft ²
3.05 x 20	60	10' x 65'6"	650
2.44 x 20	48	8' x 65'6"	525
2.21 x 20	44	7'3" x 65'6"	476
2.07 x 20	42	6'9-1/2" x 65'6"	445
1.98 x 20	40	6'6" x 65'6"	426
1.83 x 20	36	6' x 65'6"	394
1.65 x 20	34	5'5" x 65'6"	355
1.13 x 15.2	16.7	44-1/2" x 50'	185

Platon Components

Platon Membrane	Rolls are 20m (65'6") long
Heights	3.05m, 2.44m, 2.21m, 2.07m, 1.98m, 1.83m, 1.65m, 1.13m x 15.2m 10', 8', 7'3", 6'9-1/2", 6'6", 6', 5'5", 44-1/2" x 50'
Minimum Sheet Thickness	<ul style="list-style-type: none"> • 24mil in the flat sections • 21mil in the dimples
Dimple Height	6mm (1/4")
Platon Speedclip	Fastener engages 4 dimples and presses the smooth tab against the wall
Platon Moulding	Used to seal open edges of the membrane to prevent soil ingress
Platon Plugs	Fit into the dimple to provide pull-through resistance for concrete nails (or screws on ICFs)

Characteristics

Working Temperature	-50°C to 80°C (-58°F to 176°F)
Softening Temperature	125°C (257°F)
Thermal Resistance	R .68
Water Vapor Permeability	0.05 Perms
Air Volume/Dimple Side	4.0l/m ² (1gal/yd ²)
UV Stabilization	Minimum 2% carbon black content
Toxicity	None
Recycled Plastic Content	+ 85%
Approvals	<ul style="list-style-type: none"> • Canada - CCMC 12266R, CCMC 12878R, BMEC 91-6-154 • USA - ICC-ES Report ESR-2767

FOUNDATION WRAP

Platon is a tough, waterproof membrane that wraps around foundation to keep wet soil away from the wall.

Advantages at a Glance

Double leakage protection

Holds wet soil away from the wall and provides drainage as needed

Bridges foundation cracks

Permanently bridges foundation cracks, even if walls shift, crack or settle

Versatile

Works on block walls, poured concrete walls, permanent wood, ICFs and existing foundations

Fast and easy installation

Patented Speedclip fastens to all types of foundations in any kind of weather

Environmentally responsible

Platon is made of high-density polyethylene of approximately 85% recycled content, with no by-products to contaminate the soil or air

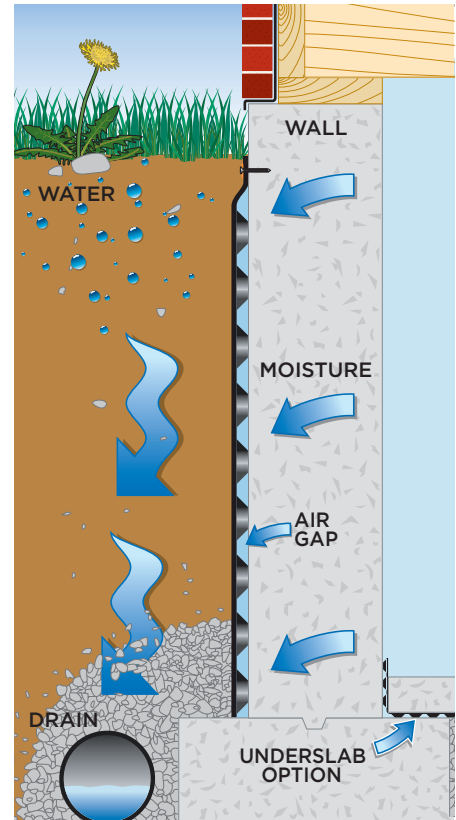
Guaranteed performance

30-year product warranty when used as a foundation wrap

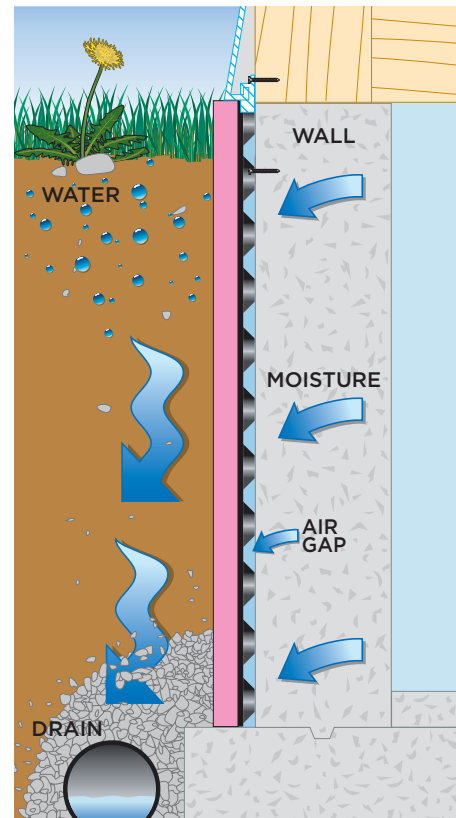
HOW PLATON WORKS FOR YOUR FOUNDATION

The dimples create an air gap that holds the membrane and wet soil away from the foundation wall. Unlike conventional tar and spray waterproofing methods, any water that finds its way past the membrane flows through the air gap to the footing drain.

As an added benefit, wall moisture condenses on the back of the Platon and flows to the footing drain. This dries the foundation in a way that no other technology can match. Because Platon does not adhere to the wall, walls can shift, crack and settle over the years without affecting Platon's remarkable performance.



PLATON FOUNDATION WRAP



PLATON WRAP ON INSULATED WALLS



PLATON INSTALLATION - FOUNDATION WALLS

INSTALLATION

1. Break off all ties and projections on the wall and clear stone and debris from the footing. Seal tie rod holes with mastic. ICF walls do not need any surface preparation. Parge block walls.
2. Chalk a line at finished grade around the foundation and run a generous bead of caulking 25mm (1") below the line.
3. Working from left to right, unroll the membrane along the foundation, dimples toward the wall, smooth tab at the top, following the chalk line. Keep the smooth tab tight to the wall.

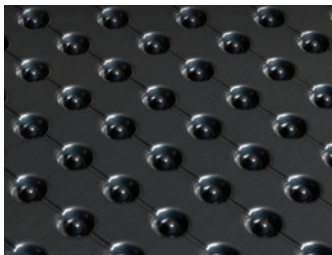
Platon must wrap the foundation from a point directly touching the top of the footing up to finished grade or ground level. If the height of the roll permits, Platon can be creased sharply at the foundation/footing joint and brought out over the footing.

4. Fasten with Speedclips 30cm (12") apart along the top of the membrane. The Speedclip dimples mesh with the top two rows of Platon dimples and the offset presses the smooth tab tight to the wall. Nail (or screw on ICFs) through the small center hole between dimples.

Alternatively, fasten with Platon Plugs and nails in the second and third row of dimples, spaced 20cm to 30cm (8" to 12") apart. Secure the smooth tab with Platon Moulding strips along the top of the tab.

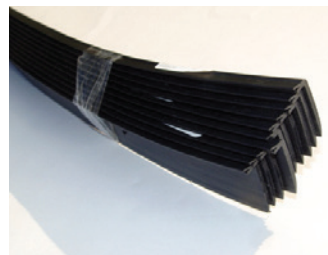
NOTE

- Platon Foundation Drainage must be used in conjunction with a foundation footing drain
- Clay soil requires additional Plugs in the fifth row of dimples (not required with Speedclips)



Platon Membrane

- One roll for every 19m (62') of foundation (allows for joint overlap)
- Membrane can be overlapped horizontally by 15cm (6") for deep foundations



Platon Moulding

- 198cm (72") lengths
- Typically 5 pieces per job
- 10 lengths per roll of Platon if using Plugs



Caulking

- Minimum 2 tubes per roll
- For concrete or wood foundations, use butyl rubber or asphalt-based roof cement
- For insulated concrete forms (ICF), use foam panel adhesive
- Do not use silicone, latex or polyurethane



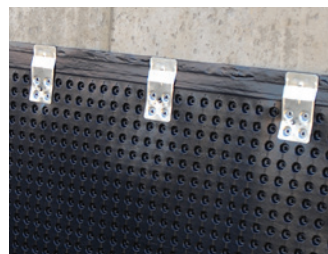
Fastening Tool

- Use a nail gun for block and cured concrete
- For ICF and PWF, use a cordless drill/screwdriver



Platon Speedclips and/or Plugs

- 65 Speedclips per roll of membrane, or 1 bag of Platon plugs per 3 rolls of membrane



Fasteners

- For concrete, use 32mm (1¼") concrete nails
- For ICF and PWF, use 41mm (1½") corrosion-resistant deck screws
- Speedclips – 1 per clip
- Moulding – 10 per piece

SUBFLOOR

Platon can transform a cold, damp room into a dry, warm and comfortable living space. It's a unique underlay solution that protects laminates, hardwood floors and carpets from moisture, and adds comfort underfoot.

Virtually all basements have moisture problems. That's because the moisture is continually released through the concrete beneath the floor covering. Platon creates a moisture proof barrier and air gap between the floor and concrete, protecting the floor covering while allowing the concrete to breathe and the moisture to vent.

As a result, the finished floor stays dry and warm, without build-up of mould, mildew or odours that affect the floor covering's lifespan and indoor air quality.



PLATON FLOORING

Advantages at a Glance

Dampness Protection

Lifelong protection against dampness rising through concrete floors

Healthy, Dry Air

Prevents musty odours, mould and mildew from entering living spaces

Comfortable

Provides a thermal break so basement feels like it's above grade

Fast and Easy Installation

Special training or equipment is not required

Versatile

Platon works with just about any floor covering—carpet, laminate, hardwood or vinyl

You can even use it in conjunction with floor heating systems

INSTALLATION

In homes, laminate flooring and its underpad can be placed directly over Platon as a floating floor. For other floor finishes, plywood or OSB sheets (11mm or 7/16" minimum thickness) are laid as a subfloor over the Platon and fastened to the concrete floor with concrete screws or masonry nails.

1. Remove existing floor covering. Ensure the concrete is clear of debris. Level low areas with floor leveling compound if required.
2. Roll out the first strip of Platon, dimples facing down, flat tab away from the wall, and cut to length. Cut off the flat tab. Reverse-roll the Platon if it curls excessively.
3. Unroll the next section with the flat tab overlapping the first section and cut to length. Apply butyl rubber caulk or foam panel adhesive between the flat tab and adjacent section or use "house-wrap" tape to seal the overlap. At end of roll joints, mesh four rows of dimples, caulk and tape.
4. Cover the Platon with plywood or OSB sheets (minimum 7/16"). Fasten through the subfloor and Platon 25mm (1") into the concrete where there is vertical movement. The 122cm (4') joints between adjacent 122cm x 244cm (4' x 8') sheets should be staggered. Leave 6mm (1/4") clearance around the perimeter of the subfloor to allow for expansion. Non-load-bearing walls may now be framed on the subfloor.

FLOOR COVERING

Follow the floor manufacturer's installation recommendations. Additional instructions specific to Platon are as follows:

Laminate Flooring

Laminate flooring and its underpad may be installed directly over Platon. The concrete must be level. Landscape fabric may be placed on the concrete to improve sound characteristics or if the concrete is slightly uneven. For commercial use and point loads exceeding 800lbs/in², the laminate should be installed over a secured subfloor.

Carpet

Install over a minimum of 11mm (7/16") secured subfloor.

Hardwood

If the flooring is to be nailed down, use 19mm (3/4") OSB and short nails, or two layers of subflooring (totaling 25mm [1"] or more) to avoid puncturing the Platon.

Vinyl floor

Glue and staple 6mm (1/4") underlay (as recommended by the flooring manufacturer) over the secured subfloor. Stagger the joints between the underlay and the subfloor.

NOTE

- Installation instructions are to be used as a guide only
- No recommendations to be interpreted as superseding or replacing any installation recommendations of the flooring manufacturer
- No warranty on the performance of the floor covering is given or implied



PLATON SUBFLOORING



AQUA Q

Aqua Q™ helps build better communities by imagining, engineering and delivering smart drainage solutions.

1-800-265-7622 • aquaq.ca